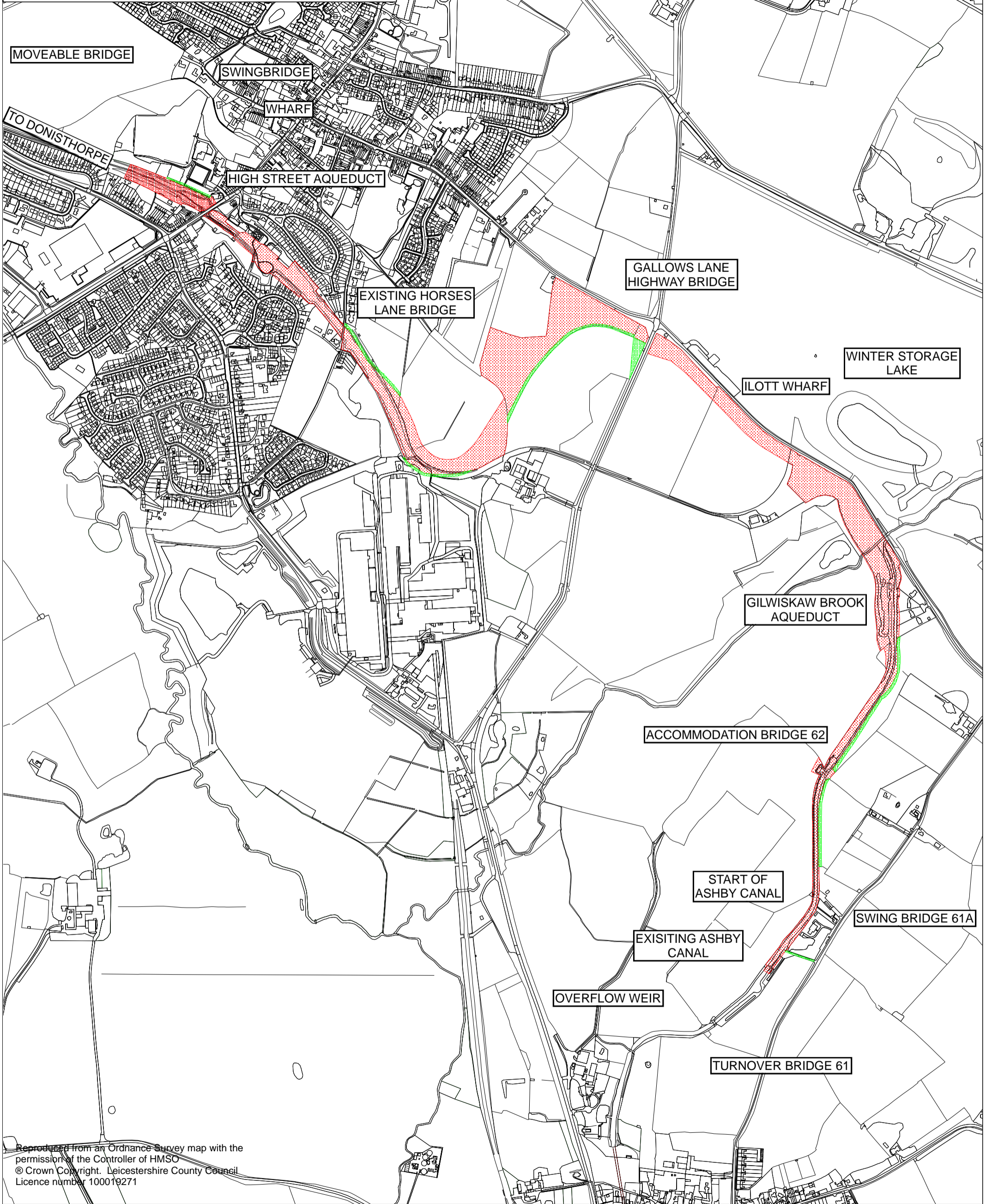




Land to be transferred to ACA



Rights for construction and maintenance to be transferred to ACA



Reproduced from an Ordnance Survey map with the permission of the Controller of HMSO
© Crown Copyright. Leicestershire County Council
Licence number 100019271

Potential Land Transfer Ashby Canal, Measham

Not to Scale @ A3 Portrait
by Vanessa Hughes
August 2021



Strategic Property Services
Corporate Resources Department
County Hall, Glenfield.
Leicester. LE3 8RE

This page is intentionally left blank